

Meridian School District Bond Issue
Northwest Middle: 32nd Street, Meridian, MS

Schematic
Design

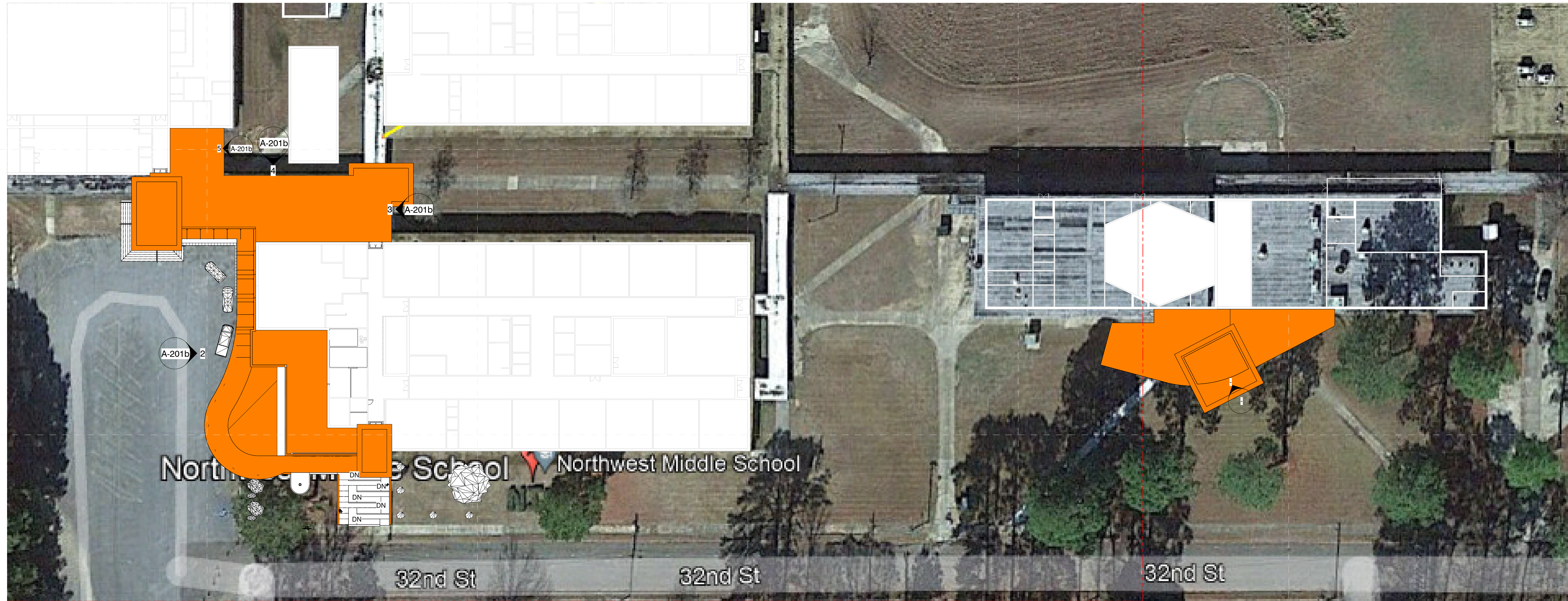
Project No	21097
Date	Nov 8, 2022
Revisions	Rev Date
Drawn	PPu
Checked	RBI

RC101b

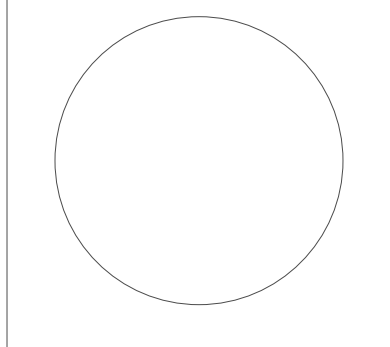
Site Improvements



1 Site Plan - Existing w Overlay
1" = 30'-0"



2 Site Plan - New w Overlay
1" = 30'-0"



Meridian School District Bond Issue
Northwest Middle: 32nd Street, Meridian, MS

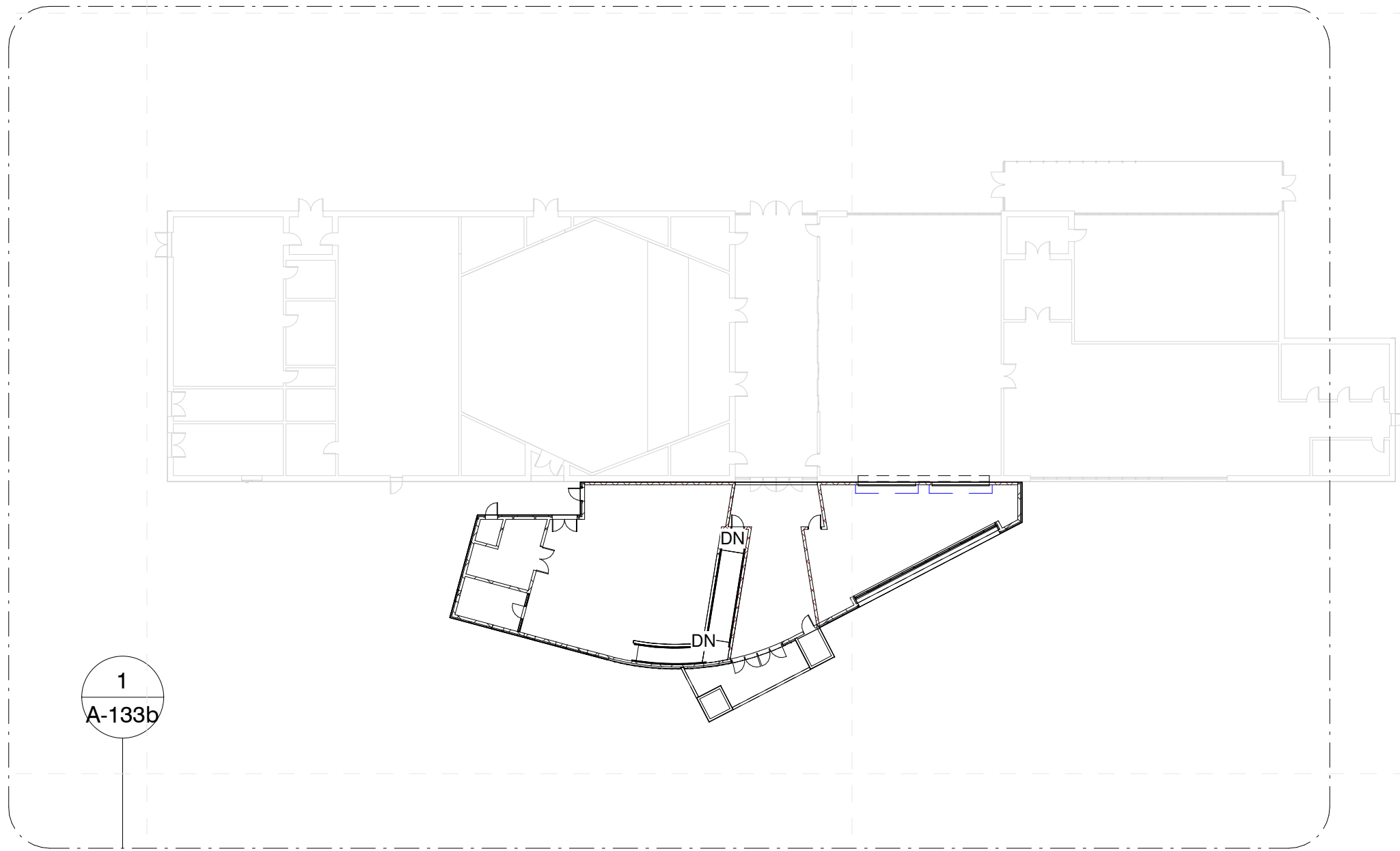
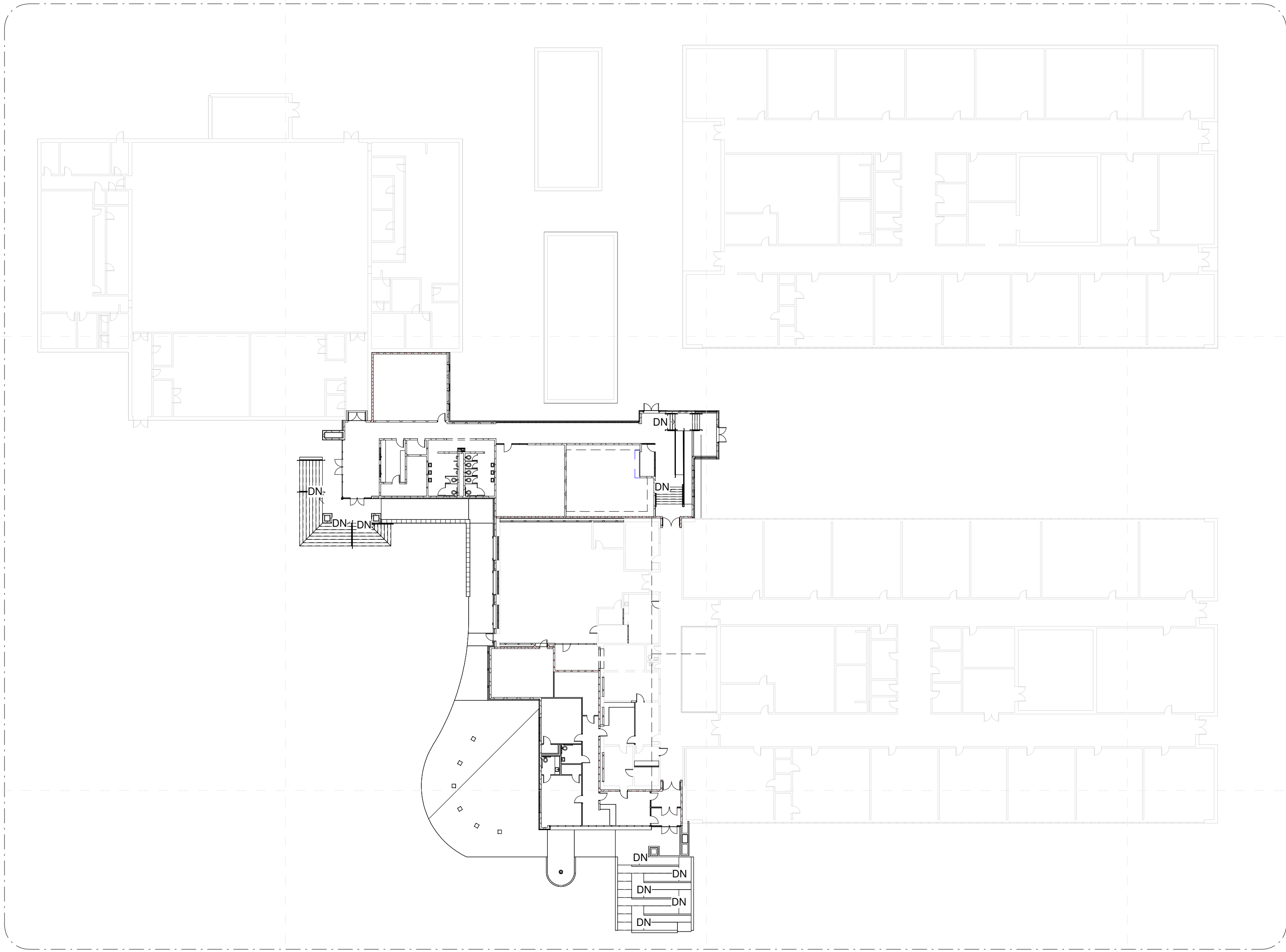
Schematic
Design

Project No	21097
Date	Nov 8, 2022
Revisions	Rev Date
Drawn	PPu
Checked	RBI

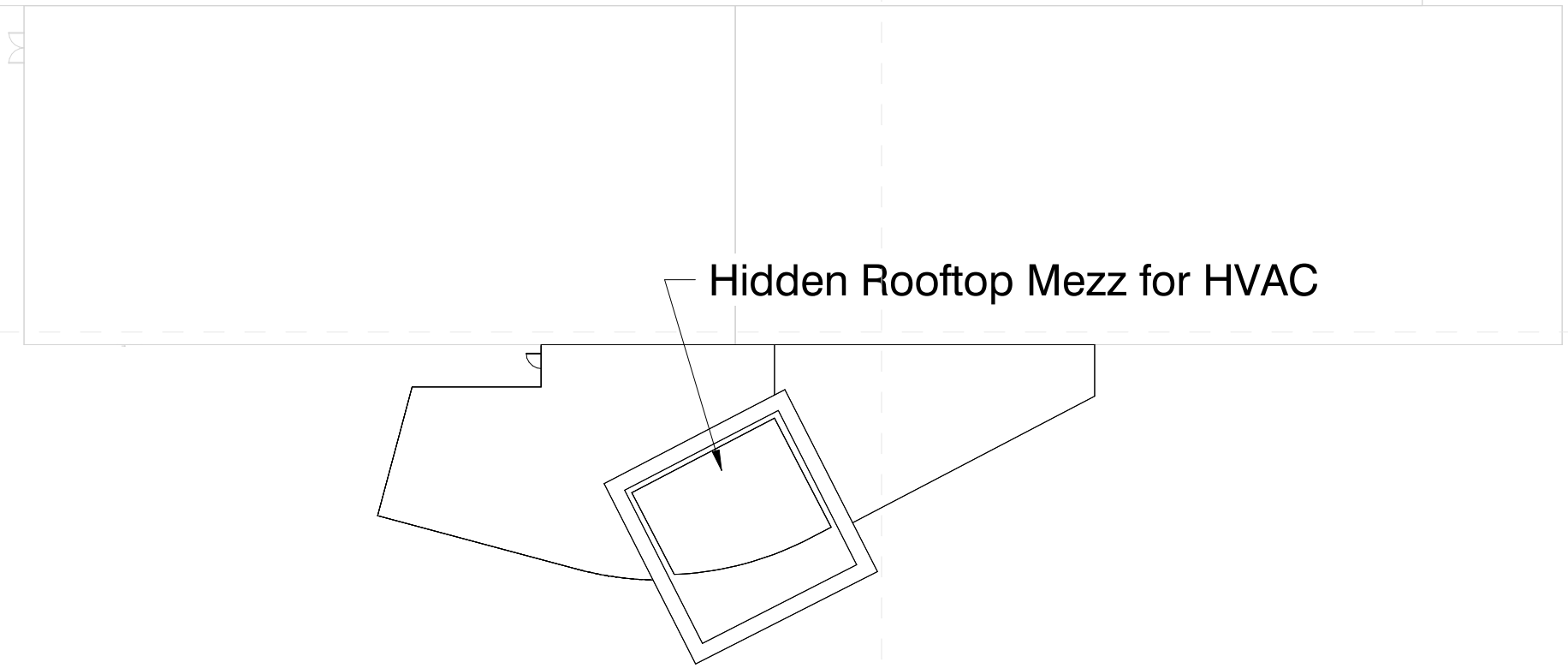
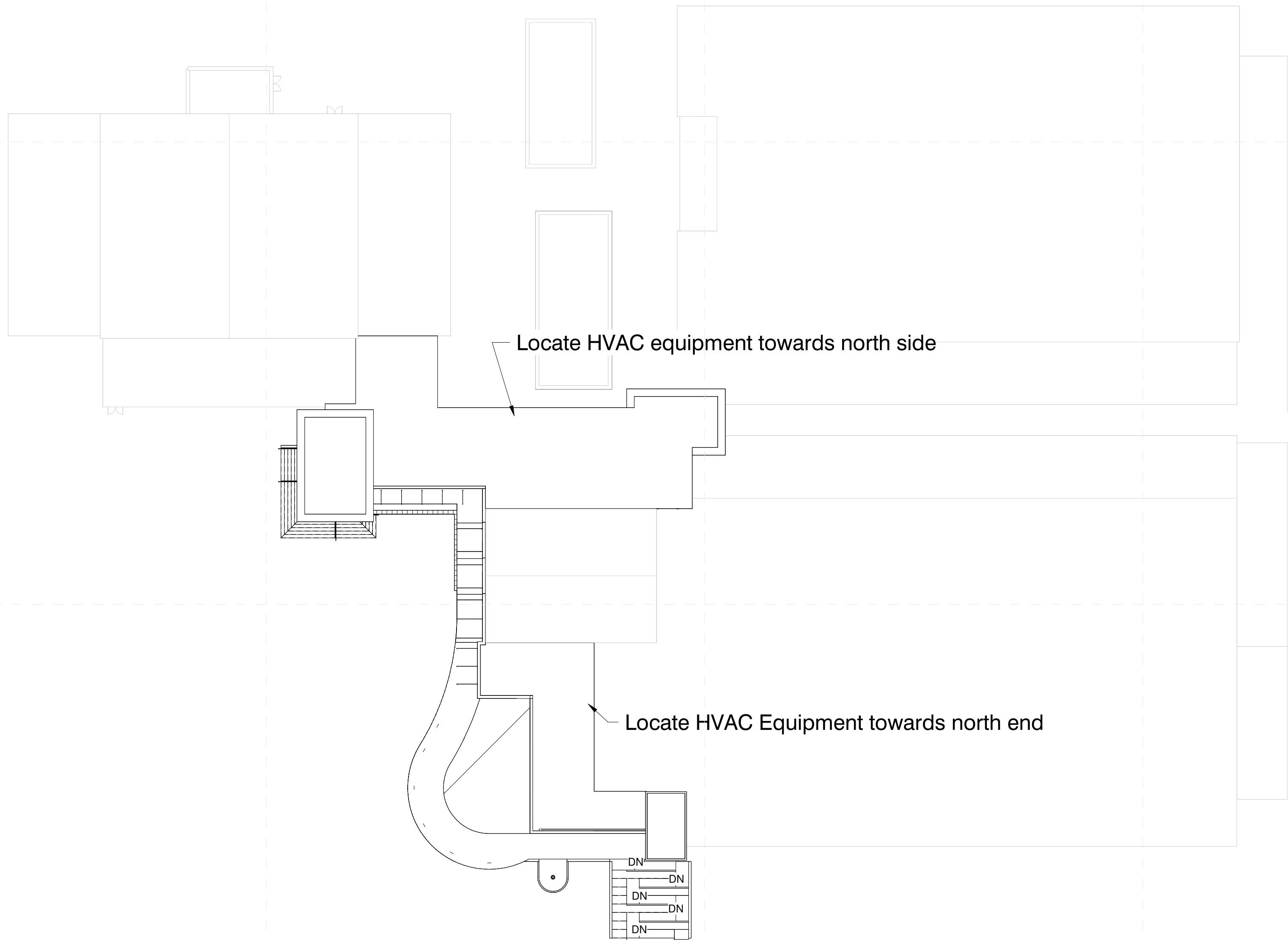
A-101b

Composite Floor Plan

- General Notes
- Science lab shall be constructed as a storm shelter for total occupancy added to school, noted on RA601b



1 Composite Floor Plan - New
1/32" = 1'-0"



2 Composite Floor Plan - New Roof
1/32" = 1'-0"



**DALE
BAILEY**
AN ASSOCIATION

Architects

One Jackson Place / 250
188 East Capital Street
Jackson, MS 39201
p 601.352.5411

201 Park Court Suite B
Ridgeland, MS 39157
p 601.790.9432

161 Lameuse St. Suite 201
Biloxi, MS 39530
p 228.374.1408

dalebaileyplans.com

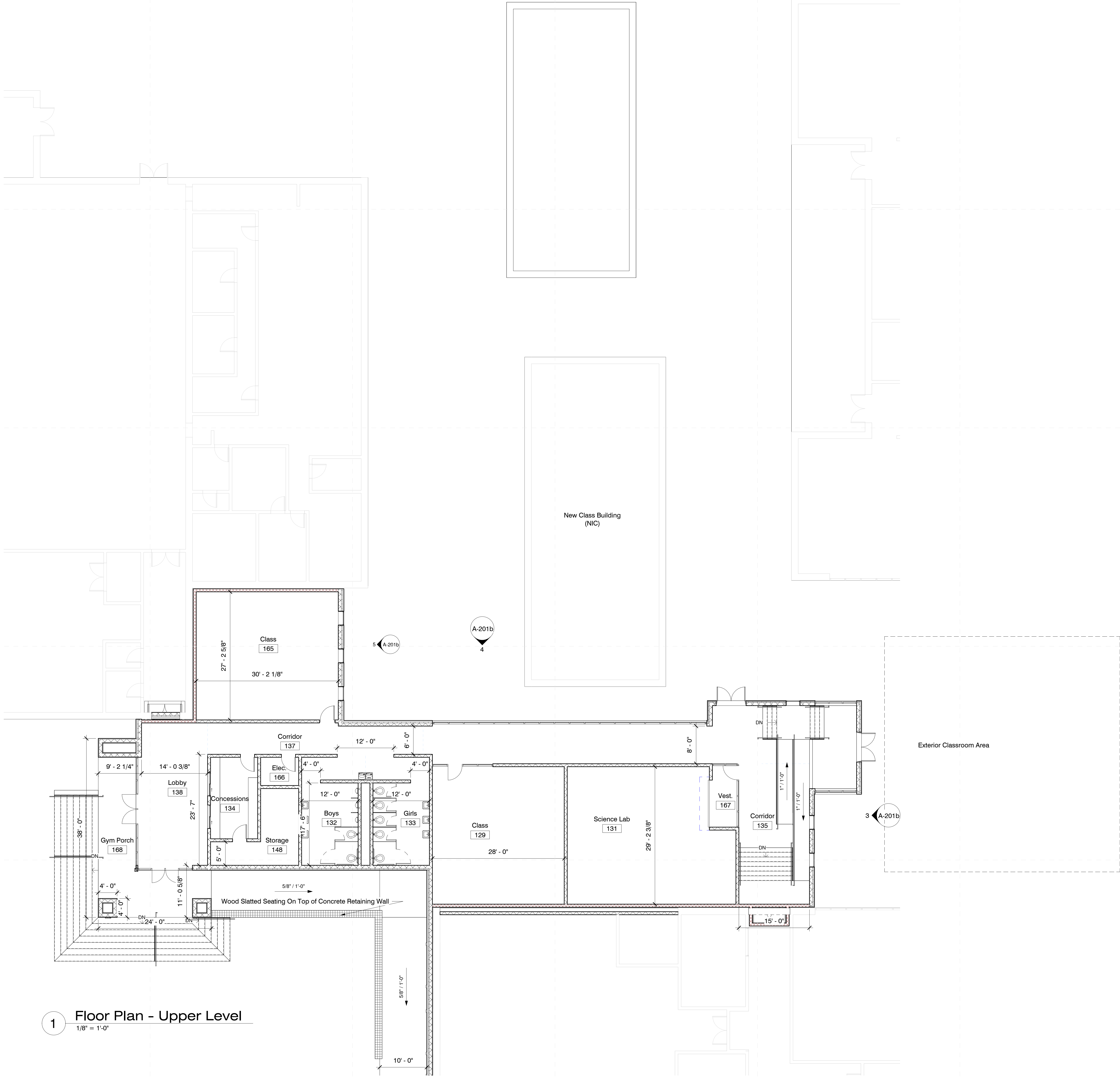


Project No	21097
Date	Nov 8, 2022
Revisions	Rev Date
Drawn	PPU
Checked	RBI

A-131b

Lower Level -
Admin/Media

11/3/2022 8:15:36 AM
C:\Users\pmpur\Documents\22034 Northwest Middle_paulpurses\Y2OHY.rvt



1 Floor Plan - Upper Level
1/8" = 1'-0"

- General Enlarged Plan Notes
1. All interior walls to be type "B1" UNO
 2. All furniture shown in plan is NIC.
 3. All flooring is to extend underneath casework.
 4. All door frames in masonry wall to be located 8" off perpendicular wall (typ.) unless indicated otherwise. All door frames in metal stud walls to be located 4" off perpendicular walls (typ.) unless indicated otherwise. Provide min. clear of 12" on push side of door and 18" on pull side.
 5. Reference building elevations (A-200 Sheets) for exterior control joint locations.
 6. All DS tie into boot and underground water line unless otherwise noted, see Civil.
 7. See AG series sheets for floor finish patterns.
 8. All CMU wall corners & window sills to have 1" diameter radius. Bottom course of CMU corners are not to be radiused to receive finish base as scheduled.
 9. All backsides of bathroom partition doors and single unit restroom doors to have a Coat Hook (CH) installed.
 10. All dimensions are to interior finish face U.N.O.

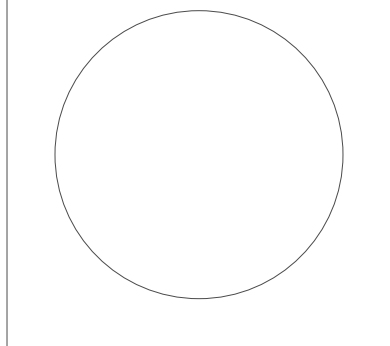
DALE
BAILEY
AN ASSOCIATION

Architects
One Jackson Place 250
188 East Capitol Street
Jackson, MS 39201
p 601.352.5411

201 Park Court Suite B
Ridgeland, MS 39157
p 601.790.9432

161 Lameuse St. Suite 201
Biloxi, MS 39530
p 228.374.1409

dalebaileyplans.com



Meridian School District Bond Issue

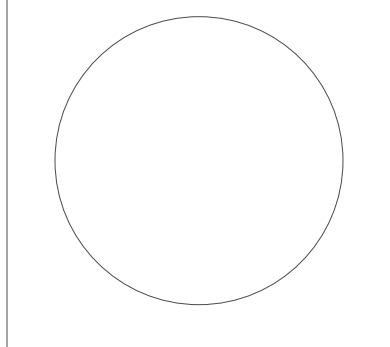
Northwest Middle: 32nd Street, Meridian, MS

Schematic
Design

Project No	21097
Date	Nov 8, 2022
Revisions	Rev Date
Drawn	PPu
Checked	RBI

A-132b

Upper Level - Class/Gym



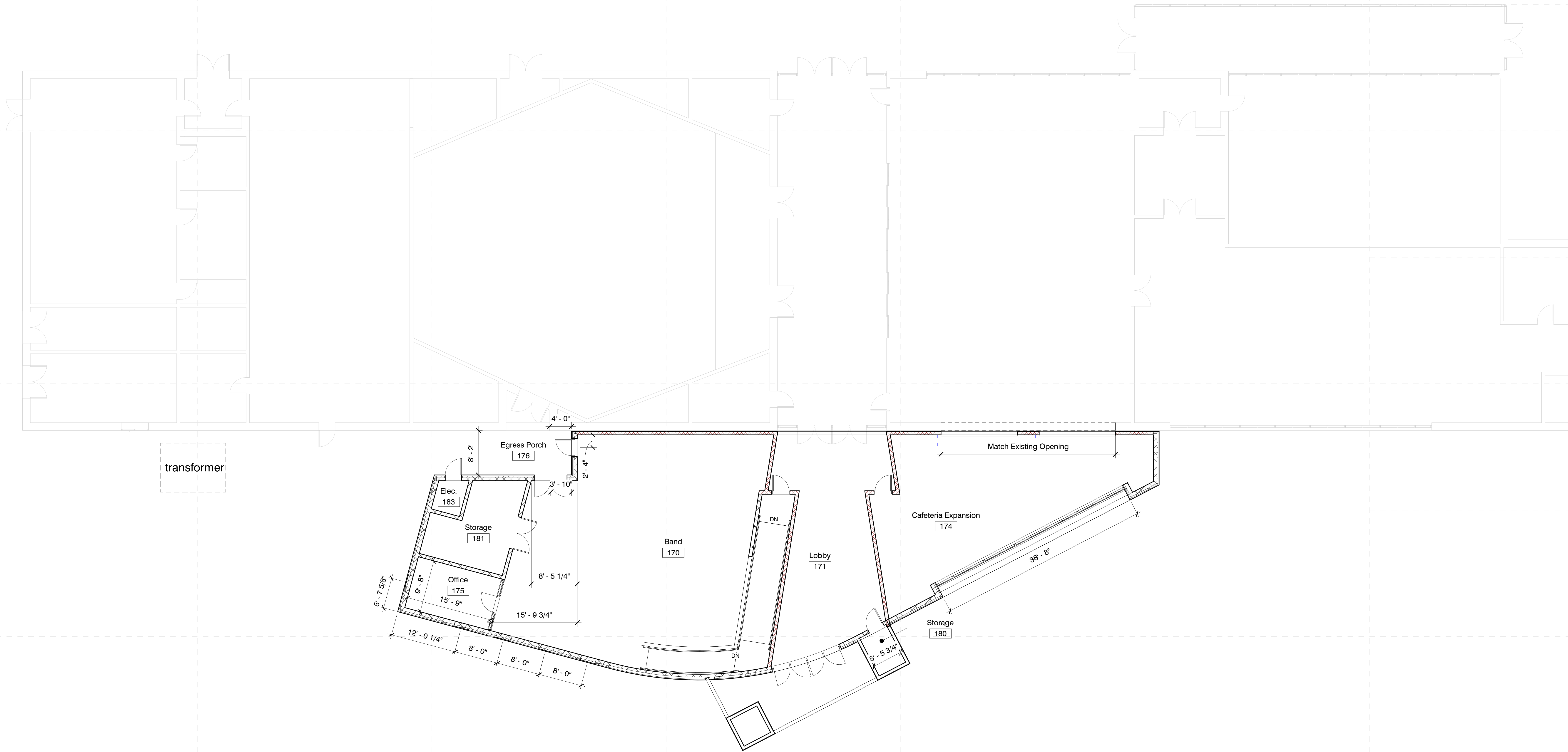
Meridian School District Bond Issue
Northwest Middle: 32nd Street, Meridian, MS

Schematic
Design

Project No	21097
Date	Nov 8, 2022
Revisions	Rev Date
Drawn	PPu
Checked	RBI

A-133b

East Side of Campus



1 Floor Plan - Auditorium/Cafeteria
1/8" = 1'-0"