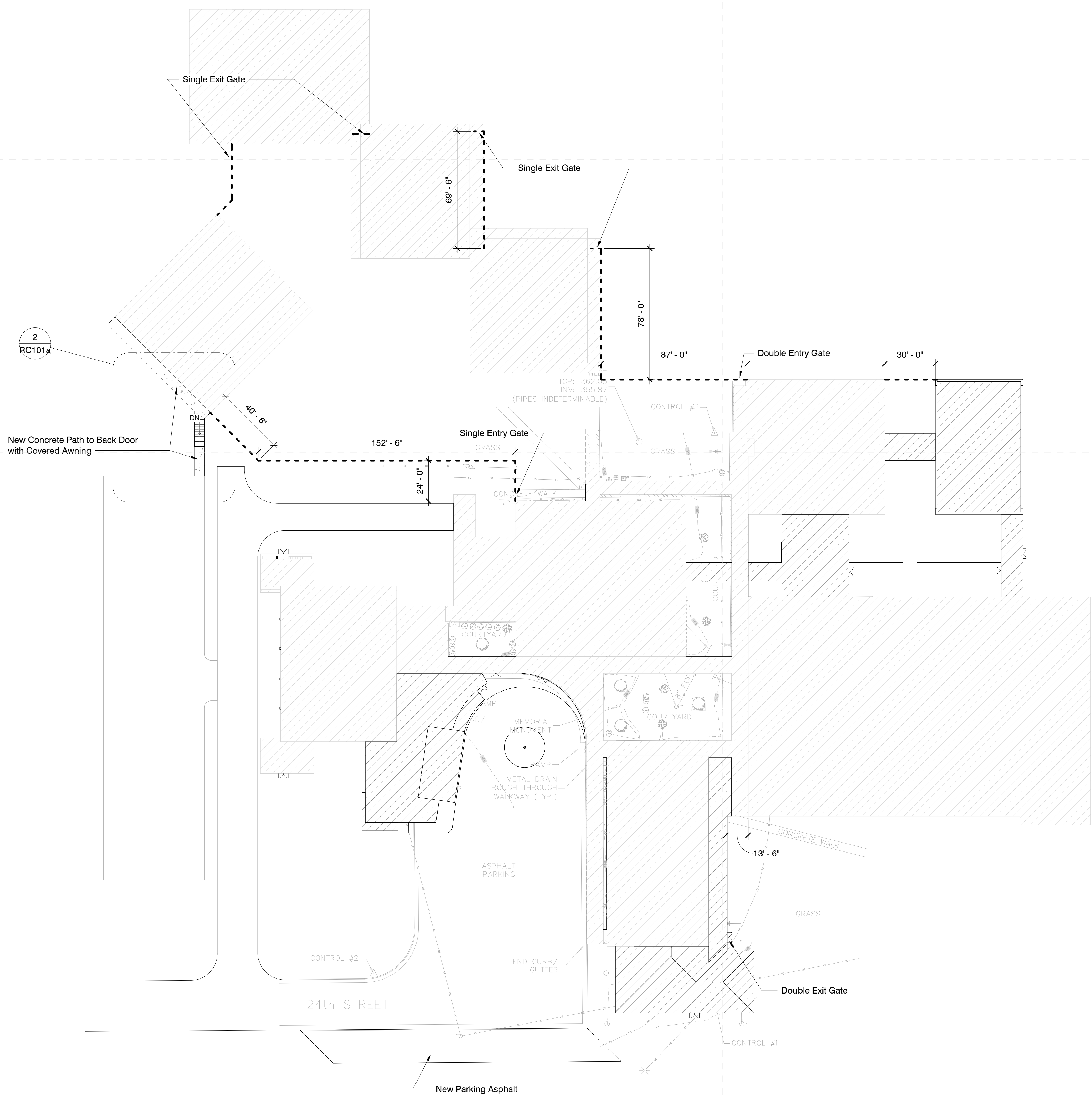
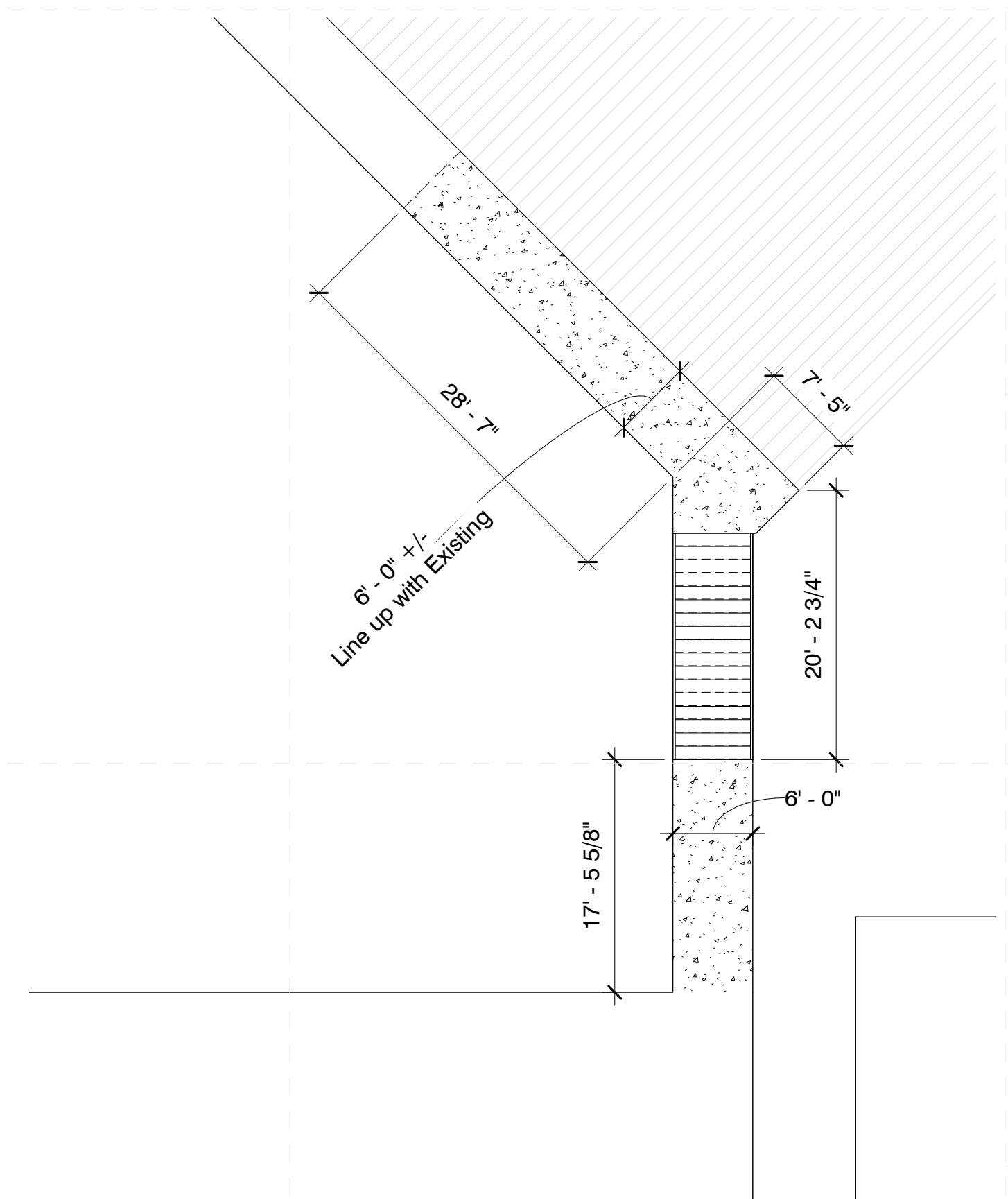


**General Site Notes**

1. All grassed areas shall be graded to drain to the appropriate inlet or slope to ensure positive drainage away from the building
2. All downspouts and boots to be connected to subsurface drainage. See Civil drawings.
3. Heavy Dashes lines indicate 8' Tall Vinyl Coated Chain Link Fence.
4. All Gates Shall be Equipped with panic hardware devices.



**1 Composite Site Plan**  
1" = 30'-0"



**2 Covered Walk at Parking**  
1" = 10'-0"

2/7/2023 7:36:40 AM C:\Users\pmpur\Documents\22034 Magnolia Middle\_paulpurser\220HY.rvt